

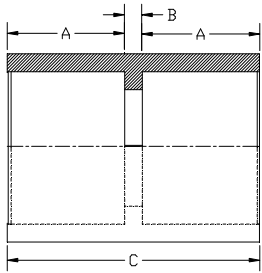
PRODUCT GUIDE

uPVC Pressure Pipes and Fittings System

Injection Moulded Fittings Range

Socket

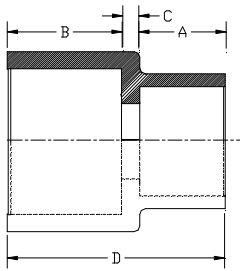
Solvent socket



Nominal Size (mm)	A mm	B mm	C mm	
20	17.50	3.00	38.00	**
25	20.00	3.00	43.00	**
32	23.50	3.00	50.00	**
40	28.00	3.00	59.00	**
50	33.00	3.00	69.00	**
63	39.50	3.00	82.00	**
75	43.50	3.00	90.00	
90	51.00	5.00	107.00	
110	61.00	9.00	131.00	

For connecting pipes.

Reducing Socket



Nominal Size (mm)	A mm	B mm	C mm	D mm	
25x20	17.50	20.00	3.00	40.50	**
32x20	17.50	23.50	3.00	40.00	**
32x25	20.00	23.50	3.00	46.50	**
40x32	23.50	28.00	3.00	54.50	**
50x32	23.50	33.00	3.00	59.50	**
50x40	26.00	31.00	3.00	60.00	
63x50	31.00	37.50	3.00	71.50	
75x63	37.50	43.50	3.00	84.00	
90x63	37.50	51.00	5.00	93.50	
90x75	43.50	51.00	5.00	99.50	
110x63	37.50	61.00	9.00	107.50	
110x90	51.00	61.00	9.00	121.50	
160x110	61.00	86.00	11.00	158.00	

Used to a convert different pipe sizes.

** All are "National" Injection moulded fittings conform to SLS 659 certification and suitable for Type 1000 kPa (10 PN) pressure class .

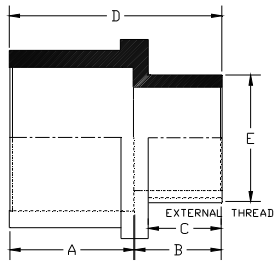
*Threads if precast on "National" fittings comply with BS 21: pipe thread specifications.

uPVC Pressure Pipes and Fittings System

Injection Moulded Fittings Range

Socket

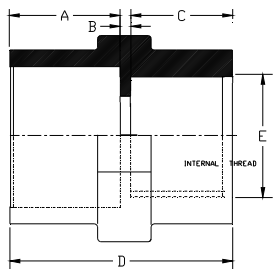
Valve Socket



Nominal Size (mm)	A mm	B mm	C mm	D mm	E (INCH)	
20	17.50	22.00	14.00	39.50	1/2	**
25	20.00	24.00	15.50	44.00	3/4	**
32	23.50	27.00	17.00	50.50	1	**
40	28.00	30.00	19.50	58.00	1 1/4	**
50	33.00	31.00	19.50	64.00	1 1/2	**
63	39.50	37.00	24.00	76.50	2	**
75	43.50	42.00	31.50	85.50	2 1/2	
90	51.00	45.50	34.00	96.50	3	
110	61.00	51.00	39.20	112.00	4	

Used for connecting brass valves, service ferrules and G.I. pipe sockets.

Faucet Socket



Nominal Size (mm)	A mm	B mm	C mm	D mm	E (INCH)	
20	17.50	4.00	14.00	35.50	1/2	**
25	20.00	4.00	15.50	39.50	3/4	**
32	23.50	4.00	17.50	46.00	1	**
40	28.00	4.00	19.50	57.50	1 1/4	**
50	33.00	6.00	19.50	57.50	1 1/2	**
63	39.50	6.00	24.00	69.50	2	**
75	43.50	17.80	30.20	91.50	2 1/2	
90	51.00	22.70	33.30	107.00	3	
110	61.00	27.70	39.30	128.00	4	

Used for connecting bib taps, other appliances, and G.I. pipes.

** All are "National" Injection moulded fittings conform to SLS 659 certification and suitable for Type 1000 kPa (10 PN) pressure class.

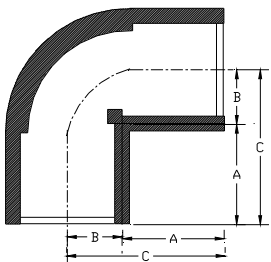
*Threads if freecast on "National" fittings comply with BS 21: pipe thread specifications.

uPVC Pressure Pipes and Fittings System

Injection Moulded Fittings Range

Elbows

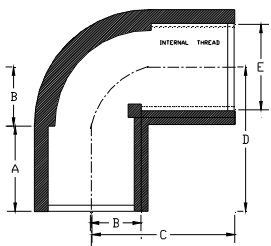
Elbow 90⁰



Nominal Size (mm)	A mm	B mm	C mm	
20	17.50	11.00	28.50	**
25	20.00	13.50	33.50	**
32	23.50	17.50	41.00	**
40	28.00	21.50	49.50	**
50	33.00	27.00	60.00	**
63	39.50	33.50	73.00	
75	43.50	40.50	84.00	
90	51.00	48.00	99.00	
110	61.00	60.00	121.00	

Used for short turns of 90⁰. These are not advisable in large diameter pipes as they restricts the flow due to turbulence.

Faucet Elbow



Nominal Size mm	A mm	B mm	C mm	D mm	E (INCH)	
20	17.50	11.00	25.00	28.50	1/2	**

Suitable for bib tap connection as it reduces the offset length to a minimum.

** All are "National" Injection moulded fittings conform to SLS 659 certification and suitable for Type 1000 kPa (10 PN) pressure class .

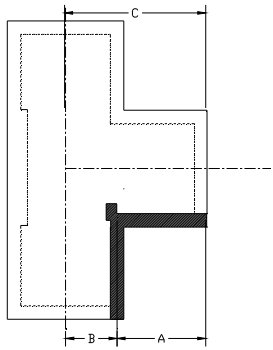
*Threads if freecast on "National" fittings comply with BS 21: pipe thread specifications

uPVC Pressure Pipes and Fittings System

Injection Moulded Fittings Range

Tees

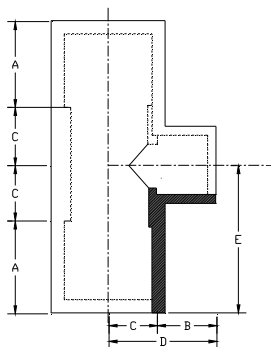
Equal Tee



Nominal Size (mm)	A mm	B mm	C mm	
20	17.50	11.00	28.50	**
25	20.00	13.50	33.50	**
32	23.50	17.50	41.00	**
40	28.00	21.50	49.50	**
50	33.00	27.00	60.00	**
63	39.50	33.50	73.50	**
75	43.50	40.50	90.00	
90	51.00	48.00	107.00	
110	61.00	61.00	131.00	
140	76.00	77.00	161.00	
160	86.00	88.00	181.00	

Used for junctions and bypasses in pipe networks.

Reducing Tee



Nominal Size mm	A mm	B mm	C mm	D mm	E mm	
25x20	20.00	17.50	13.60	31.10	33.60	**
32x20	23.50	17.50	17.10	34.60	58.10	**
32x25	23.50	20.50	17.10	37.60	40.60	**
40x20	26.00	16.00	21.00	37.00	42.00	
40x25	26.00	18.50	21.00	47.00	39.50	
40x32	26.00	22.00	21.00	43.00	48.00	
50x32	32.00	22.00	26.00	48.00	57.00	
50x40	31.00	26.00	26.00	52.00	57.00	
63x32	37.50	22.00	32.50	54.50	70.00	
63x40	37.50	26.00	32.50	58.50	70.00	
63x50	37.50	31.00	32.50	63.50	70.00	
75x63	43.50	37.50	38.50	76.00	82.00	
90x75	51.00	43.50	46.50	89.50	97.00	

Used for junctions and bypasses in pipe networks.

** All are "National" Injection moulded fittings conform to SLS 659 certification and suitable for Type 1000 kPa (10 PN) pressure class .

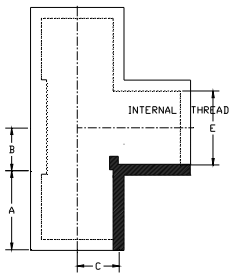
*Threads if freecast on "National" fittings comply with BS 21: pipe thread specifications

uPVC Pressure Pipes and Fittings System

Injection Moulded Fittings Range

Tees

Faucet Tee



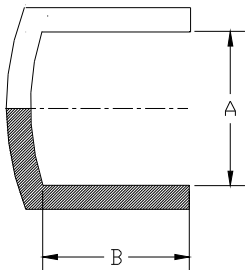
Nominal Size mm	A mm	B mm	C mm	E (inch)
20	17.50	11.00	14.00	1/2

**

Suitable for bib tap connection as it reduces the offset length to a minimum.

End cap

End cap



Nominal Size (mm)	A mm	B mm
20	20.00	17.50
25	25.00	20.00
32	32.00	23.50
40	40.00	28.00
50	50.00	33.00
63	63.00	39.50
75	75.00	43.50
90	90.00	51.00
110	110.00	61.00
140	140.00	76.00
160	160.00	86.00

**
**
**
**
**
**

Used at the terminating point of a pipe line.

** All are "National" Injection moulded fittings conform to SLS 659 certification and suitable for Type 1000 kPa (10 PN) pressure class .

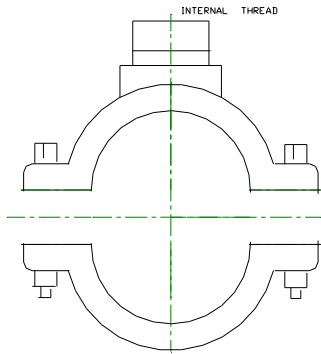
*Threads if freecast on "National" fittings comply with BS 21: pipe thread specifications.

uPVC Pressure Pipes and Fittings System

Injection Moulded Fittings Range

Clamp saddle

Clamp saddle



For connecting a service pipe to the main pipe line, a uPVC Clamp saddle could be used. The two halves of the clamp saddle are bolted together on straight uPVC pipes, as shown in the diagram.

The rubber gasket around the outlet of the clamp saddle would be in a compressed position against the external surfaces of the pipe after bolting.

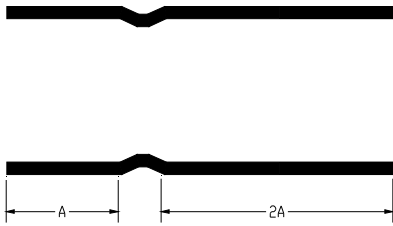
Nominal Size Mm
50 x 20
50 x 25
63 x 20
63 x 25
63 x 32
75 x 20
75 x 25
75 x 32
90 x 20
90 x 25
90 x 32
110 x 20
110 x 25
110 x 32
160 x 20
160 x 25
160 x 32
225 x 20
225 x 25
225 x 32

uPVC Pressure Pipes and Fittings System

Fabricated Fittings Range

Socket

Repair Socket (Solvent Socketed Type)

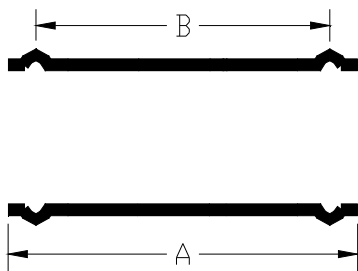


Nominal Size mm	A mm
20	20
25	24
32	28
40	34
50	41
63	50
75	59
90	69
110	83
140	104
160	118

Used for repair of pipes ,curing should be allowed prior to restoration of flow.

Coupler

Repair Coupler Short (Ring seal type)



Nominal Size mm	A mm	B mm
63	245	180
75	265	190
90	270	195
110	295	215
160	350	250
225	405	295
280	465	315

Consists of two rubber seals either side used for speedy repair of pipes.

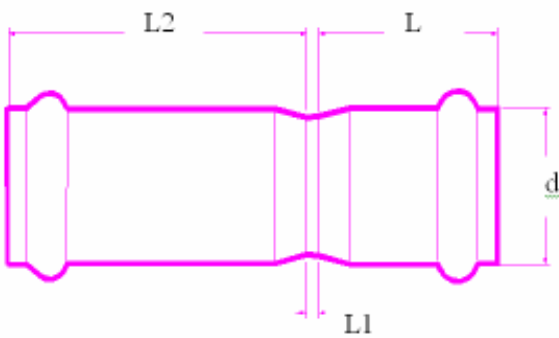
*All "National" uPVC fittings described above are available in Type 1000 kPa (10 PN) as well as Type 600 kPa (6 PN) pressure class.

uPVC Pressure Pipes and Fittings System

Fabricated Fittings Range

Coupler

Repair Coupler Long (Ring seal type)

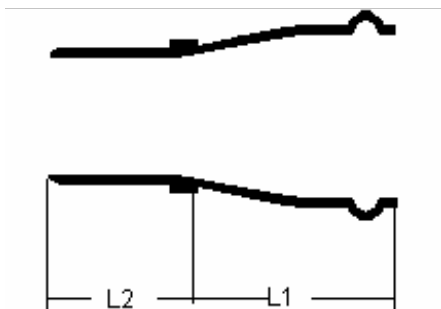


Nominal Size mm	L mm	L1 mm	L2 mm
63	120	10	196
90	135	10	229
110	145	330	346
160	170	340	363
225	205	540	462
280	220	600	460

Consists of two rubber seals either side used for speedy repair of pipes.

Bell form Reducer

Bell form Reducer



Nominal Size mm	L1 mm	L2 mm
110 x 90	185	160
160 x 110	240	170

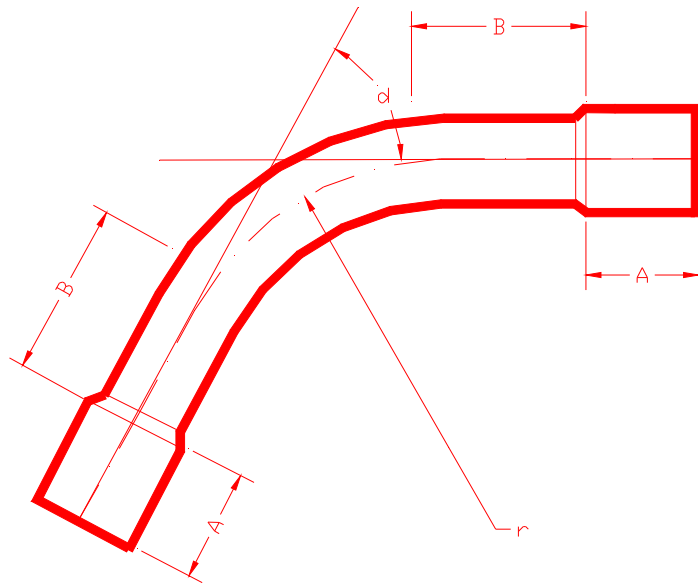
*All "National" uPVC fittings described above are suitable for Type 1000 kPa (10 PN) pressure class unless stated other wise.

uPVC Pressure Pipes and Fittings System

Fabricated Fittings Range

Bends

Bend Socket /Socket (Solvent Type)



Nominal Size mm	Angle Deg. d	r radius of curvature mm	A mm	B mm
20	11 1/4	55	20	35
	22 1/2	55	20	35
	45	55	20	35
	90	55	20	35
25	11 1/4	60	24	50
	22 1/2	60	24	50
	45	60	24	50
	90	60	24	50
32	11 1/4	75	28	65
	22 1/2	75	28	65
	45	75	28	65
	90	75	28	65
40	11 1/4	95	34	75
	22 1/2	95	34	75
	45	95	34	75
	90	95	34	75
50	11 1/4	105	41	90
	22 1/2	105	41	90
	45	105	41	90
	90	105	41	90
63	11 1/4	137	50	105
	22 1/2	137	50	105
	45	137	50	105
	90	137	50	105

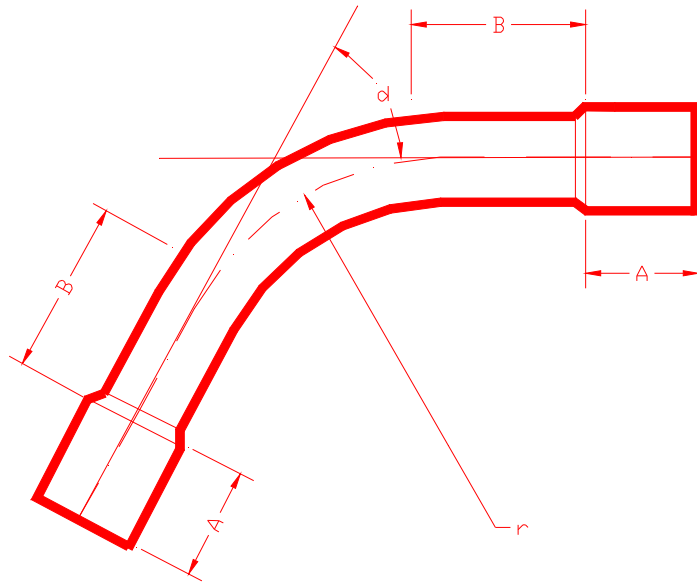
**All dimension in millimeters

Used where long radius turns are required ,smaller friction loss compared to elbow.

uPVC Pressure Pipes and Fittings System

Fabricated Fittings Range

Bends



Bend Socket /Socket (Solvent Type)

Nominal Size mm	Angle Deg. d	r radius of curvature mm	A mm	B mm
75	11 1/4	188	59	125
	22 1/2	188	59	125
	45	188	59	125
	90	188	59	125
90	11 1/4	250	69	140
	22 1/2	250	69	140
	45	250	69	140
	90	250	69	140
110	11 1/4	315	83	170
	22 1/2	315	83	170
	45	315	83	170
	90	315	83	170
160	11 1/4	480	118	270
	22 1/2	480	118	270
	45	480	118	270
	90	480	118	270
225	11 1/4	675	175	360
	22 1/2	675	175	360
	45	675	175	360
	90	676	175	360
280	11 1/4	840	220	448
	22 1/2	840	220	448
	45	840	220	448
	90	840	220	448

Used where long radius turns are required , smaller friction loss compared to elbow.

****All dimension in millimeters**

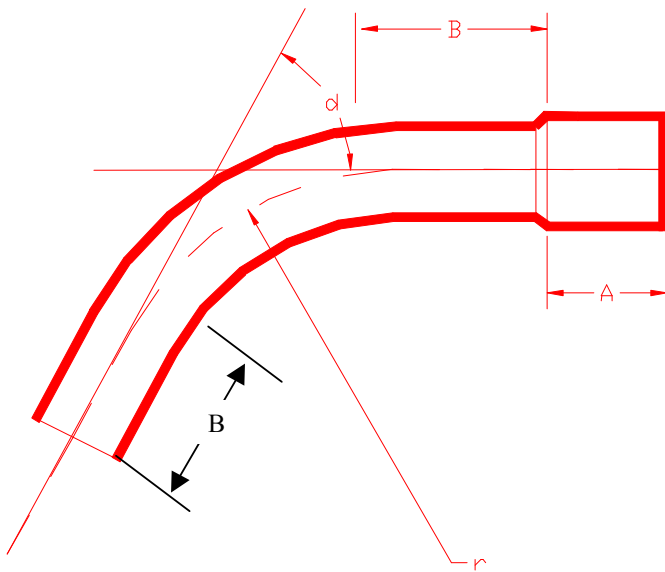
*All "National" uPVC fittings described above are available in Type 1000 kPa (10 PN) as well as Type 600 kPa (6 PN) pressure class.

*Any intermediate angles can be supplied on request. Contact the Technical Division.

uPVC Pressure Pipes and Fittings System

Fabricated Fittings Range

Bends



Bend Socket /Spigot (Solvent Type)

Nominal Size mm	Angle Deg. d	r radius of curvature mm	A mm	B mm
20	11 1/4	55	20	35
	22 1/2	55	20	35
	45	55	20	35
	90	55	20	35
25	11 1/4	60	24	50
	22 1/2	60	24	50
	45	60	24	50
	90	60	24	50
32	11 1/4	75	28	65
	22 1/2	75	28	65
	45	75	28	65
	90	75	28	65
40	11 1/4	95	34	75
	22 1/2	95	34	75
	45	95	34	75
	90	95	34	75
50	11 1/4	105	41	90
	22 1/2	105	41	90
	45	105	41	90
	90	105	41	90
63	11 1/4	137	50	105
	22 1/2	137	50	105
	45	137	50	105
	90	137	50	105

**All dimension in millimeters

Used where long radius turns are required ,smaller friction loss compared to elbow

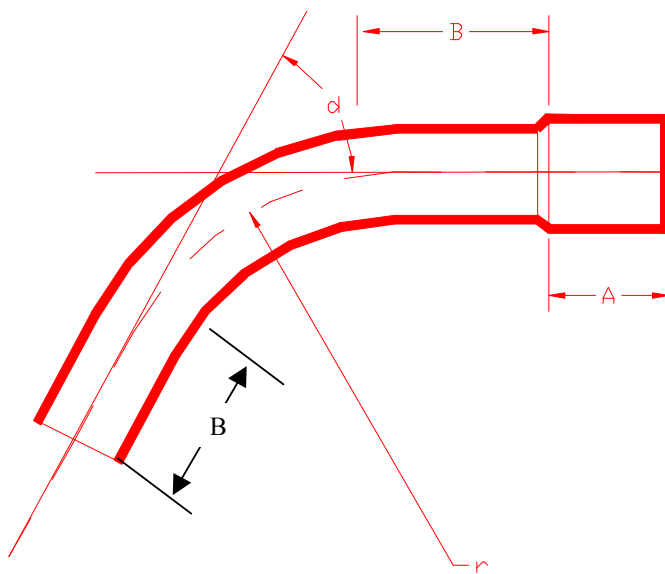
*All "National" uPVC fittings described above are available in Type 1000 kPa (10 PN) as well as Type 600 kPa (6 PN) pressure class.

*Any intermediate angles can be supplied on request. Contact the Technical Division.

uPVC Pressure Pipes and Fittings System

Fabricated Fittings Range

Bends



Bend Socket /Spigot (Solvent Type)

Nominal Size mm	Angle Deg. d	r radius of curvature mm	A mm	B mm
63	11 1/4	137	50	105
	22 1/2	137	50	105
	45	137	50	105
	90	137	50	105
75	11 1/4	188	59	125
	22 1/2	188	59	125
	45	188	59	125
	90	188	59	125
90	11 1/4	250	69	140
	22 1/2	250	69	140
	45	250	69	140
	90	250	69	140
110	11 1/4	315	83	170
	22 1/2	315	83	170
	45	315	83	170
	90	315	83	170
160	11 1/4	480	118	270
	22 1/2	480	118	270
	45	480	118	270
	90	480	118	270
225	11 1/4	675	175	360
	22 1/2	675	175	360
	45	675	175	360
	90	676	175	360
280	11 1/4	840	220	448
	22 1/2	840	220	448
	45	840	220	448
	90	840	220	448

**All dimension in millimeters

Used where long radius turns are required , smaller friction loss compared to elbow

*All "National" uPVC fittings described above are available in Type 1000 kPa (10 PN) as well as Type 600 kPa (6 PN) pressure class.

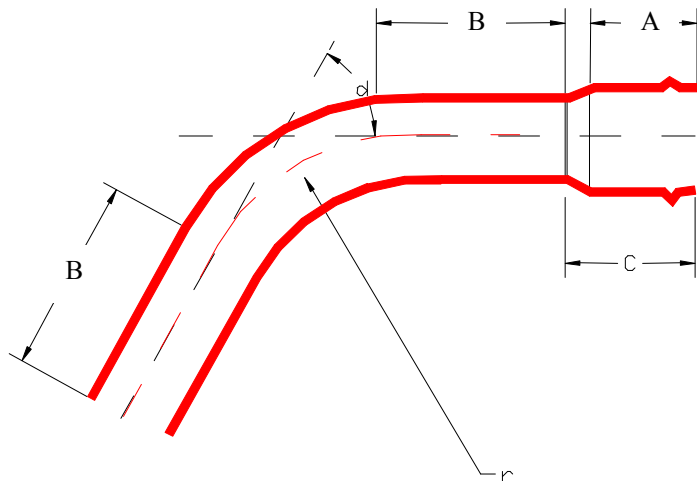
*Any intermediate angles can be supplied on request. Contact the Technical Division

Central Industries Limited

uPVC Pressure Pipes and Fittings System

Fabricated Fittings Range

Bends



Nominal Size Mm	Angle Deg. d	r radius of curvature mm	A mm	B mm	C mm
63	11 1/4	137	120	105	125
	22 1/2	137	120	105	125
	45	137	120	105	125
	90	137	120	105	125
75	11 1/4	188	125	120	130
	22 1/2	188	125	120	130
	45	188	125	120	130
	90	188	125	120	130
90	11 1/4	250	130	140	135
	22 1/2	250	130	140	135
	45	250	130	140	135
	90	250	130	140	135
110	11 1/4	315	150	170	155
	22 1/2	315	150	170	155
	45	315	150	170	155
	90	315	150	170	155
160	11 1/4	480	175	270	180
	22 1/2	480	175	270	180
	45	480	175	270	180
	90	480	175	270	180
225	11 1/4	675	205	330	230
	22 1/2	675	205	330	230
	45	675	205	330	230
	90	676	205	330	230
280	11 1/4	840	245	400	260
	22 1/2	840	245	400	260
	45	840	245	400	260
	90	840	245	400	260

****All dimension in millimeters**

U used where long radius turns are required ,
S smaller friction loss compared to elbow

Bend Socket /Spigot (Ring Seal Type)

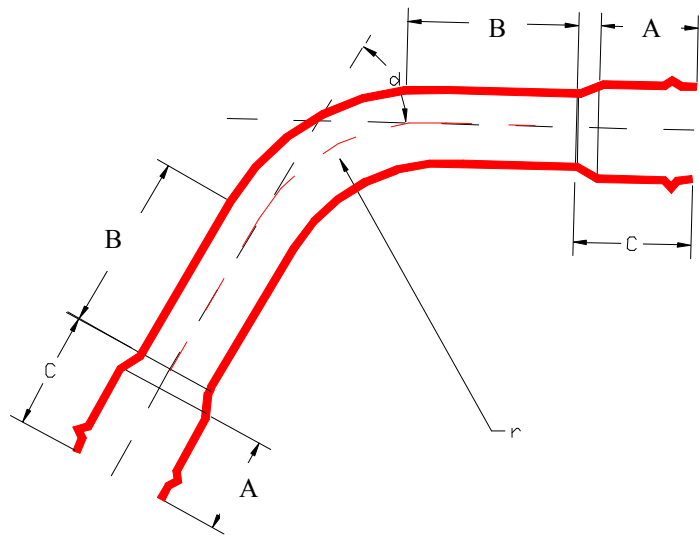
*All "National" uPVC fittings described above are available in Type 1000 kPa (10 PN) as well as Type 600 kPa (6 PN) pressure class.

*Any intermediate angles can be supplied on request. Contact the Technical Division.

uPVC Pressure Pipes and Fittings System

Fabricated Fittings Range

Bends



Bend Socket /Socket (Ring Seal Type)

Nominal Size Mm	Angle Deg. d	r radius of curvature mm	A mm	B mm	C mm
63	11 1/4	137	120	105	125
	22 1/2	137	120	105	125
	45	137	120	105	125
	90	137	120	105	125
75	11 1/4	188	125	120	130
	22 1/2	188	125	120	130
	45	188	125	120	130
	90	188	125	120	130
90	11 1/4	250	130	140	135
	22 1/2	250	130	140	135
	45	250	130	140	135
	90	250	130	140	135
110	11 1/4	315	150	170	155
	22 1/2	315	150	170	155
	45	315	150	170	155
	90	315	150	170	155
160	11 1/4	480	175	270	180
	22 1/2	480	175	270	180
	45	480	175	270	180
	90	480	175	270	180
225	11 1/4	675	205	330	230
	22 1/2	675	205	330	230
	45	675	205	330	230
	90	676	205	330	230
280	11 1/4	840	245	400	260
	22 1/2	840	245	400	260
	45	840	245	400	260
	90	840	245	400	260

****All dimension in millimeters**

Used where long radius turns are required, smaller friction loss compared to elbow.

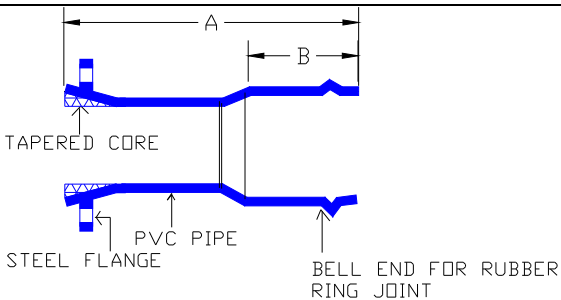
*All "National" uPVC fittings described above are available in Type 1000 kPa (10 PN) as well as Type 600 kPa (6 PN) pressure class.

*Any intermediate angles can be supplied on request. Contact the Technical Division

Fabricated Fittings Range

Flanged Socket

Flanged Socket

	Nominal Size Mm	A mm	B mm
 <p>TAPERED CORE</p> <p>STEEL FLANGE</p> <p>PVC PIPE</p> <p>BELL END FOR RUBBER RING JOINT</p>	63	210	90
	75	230	100
	90	255	105
	110	280	110
	160	380	130
	225	420	155
	280	450	180

Consists of a tapered core and steel flange on one end and a rubber ring seal on the other ;
Used for connecting uPVC pipes to flanged fittings and appliances.

*All "National" uPVC fittings described above are suitable for Type 1000 kPa (10 PN) pressure class unless stated otherwise.

*Threads if freecast on fittings comply with BS 21: pipe thread specifications..